



125 Dudley Court Clewer Hill Road, Windsor, SL4 4DW
£270,000

 **HORLER**

125 Dudley Court Clewer Hill Road, Windsor, SL4 4DW

Located on the popular Clewer Hill Road in Windsor, this charming ground-floor flat is now available with no onward chain. Offering two well-proportioned bedrooms, the apartment provides an ideal home for first-time buyers or anyone looking to downsize. Garage in adjacent block.

Call today on 01753 621234 to arrange a viewing



Inside, you'll find a bright and spacious living room with patio doors leading directly to the communal gardens — perfect for relaxing or entertaining. The kitchen is practical and well-equipped, offering everything you need for everyday cooking.

Both bedrooms are a good size, and the bathroom is conveniently placed to serve the home.

The location adds to the appeal, with a bus stop right outside the development, easy access to local shops, amenities, and schools and single garage in block adjacent to the property.

This well-situated flat combines comfort, convenience, and charm — a great opportunity to make a home in one of Windsor's most desirable areas..

General Information:

Tenure: Share of Freehold

Lease Length Remaining: 999 years from 24th June 1965

Service Charge: Approx. £2000 per annum

Council Tax Band: D

Legal Note:

Although these particulars are thought to be materially correct, their accuracy cannot be guaranteed and they do not form part of any contract.

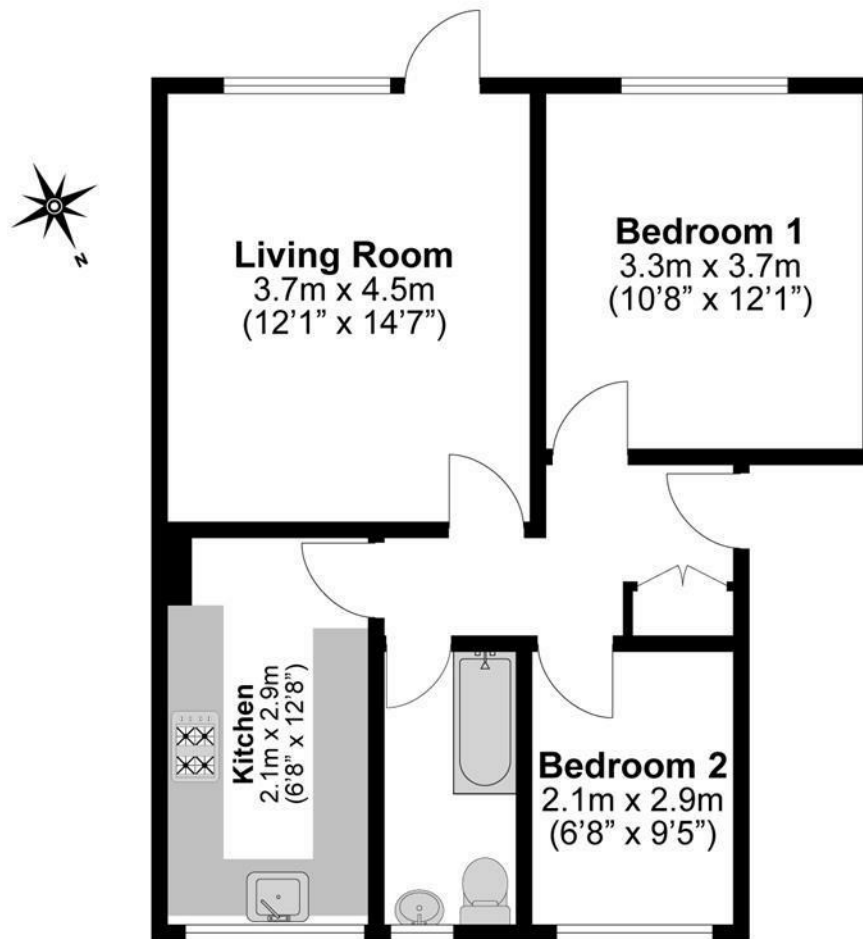




Total Approximate Floor Area

624 Square feet

58 Square metres



**Illustrations are for identification purposes only,
measurements are approximate, not to scale.**